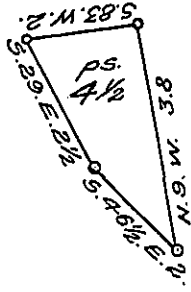


York County shore.



Lancaster County shore.

A Draught of Turtle Island situate in the river Susquehanna in Conestogo township Lancaster County opposite to lands of John Hess on the Lancaster Shore and just below high rock Island held by M^r Ensminger Containing four perches and an half Strict measure surveyed in pursuance of a Warrant dated the 4th day of November A.D. 1816 granted to Daniel Kindig

p^r Jacob Hibshman D.S.

To Jacob Spangler Esq^r }
 Surveyor General }

IN TESTIMONY that the above is a copy of the original remaining on file in the Department of Internal Affairs of Pennsylvania, made conformably to an Act of Assembly approved the 16th day of February 1833, I have hereunto set my hand and caused the Seal of said Department to be affixed at Harrisburg, this twenty first day of January 1908.

Henry Howen
 Secretary of Internal Affairs.